

*SHERIFF
CONSTRUCTION*

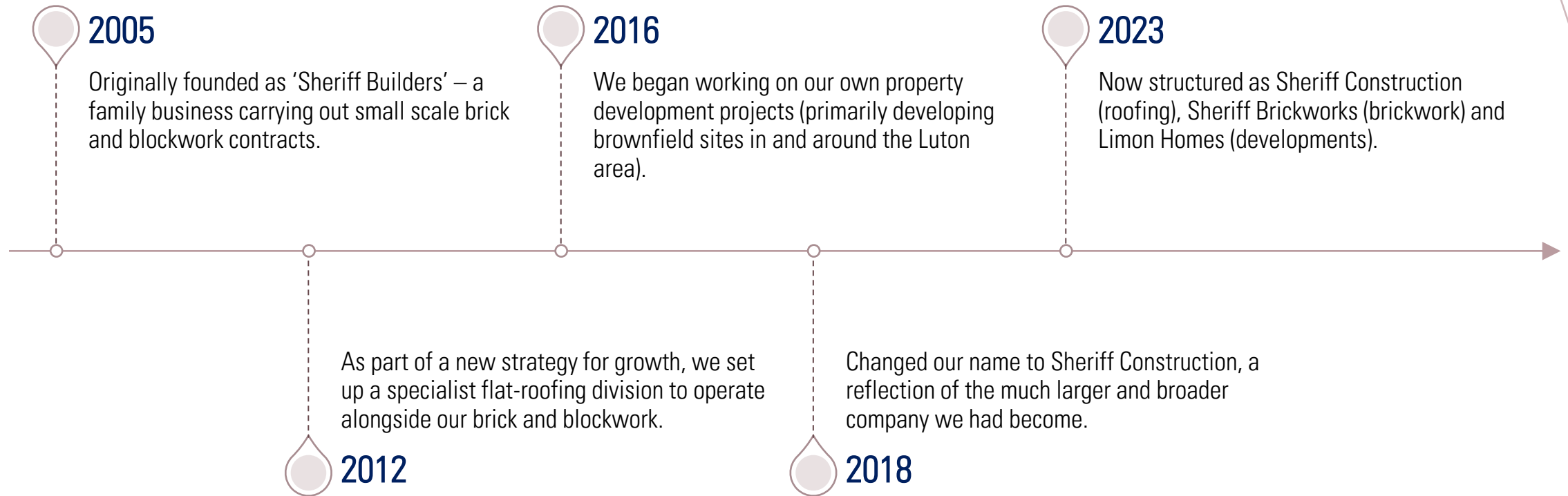




OUR MISSION

“Building for life: Reaching for quality, sustainability, value and integrity as we construct buildings fit for the times we live in now, for the next generation and beyond.”

18 YEARS OF EXCELLENCE



WHO WE ARE TODAY

- Sheriff Construction has grown into one of the leading installers of flat-roofing and waterproofing solutions for London and the South East of England.
- Working with many of the UK's major building contractors (across the commercial, residential, education and public health sectors), we're managing projects ranging from £100k to £10m.
- Delivering a service that combines quality with the highest professional standards, fantastic customer service and commitment to sustainability.
- Uncompromising reputation as a quality contractor leading to much repeated business from existing clients and fueling the significant growth of the company.
- Refocused our current portfolio to allow sole focus on roofing within Sheriff Construction while moving our brickwork expertise within the newly incorporated Sheriff Brickworks.
- Having successfully completed a number of property developments (and with more in the pipeline) we now manage these projects through another sister company, Limon Homes.

OUR SERVICES

"We take pride in our ability to integrate a range of services that's far broader than most other contractors into any construction project."

- Brick and blockwork
- Single ply systems
- Hot melt/ structural waterproofing
- Built up felt systems
- Green and biodiversity
- Fibre glass flat roofing systems (GRP)
- Cold applied liquid roofing
- Torch-on roofing felt waterproofing system (Visqueen)
- Resin bonding (for roofing and ground landscaping)
- Accessories (e.g. roof lights, smoke vents, aluminium capping)
- Flat-roof leak testing



WHO WE WORK WITH

Our extensive client list includes several of the top construction and housebuilding companies in the UK

8 Build	Balfour Beatty	Borras Construction	Carberry Services
Diamond Build	Fairview New Homes	Higgins Construction	Hill Group
Inland Homes	Kier	London & Quadrant	Mears
NU Living	Redrow Homes	Wates	Weston Homes

WHAT OUR CLIENTS SAY

"We are fortunate enough to have one of your roofing teams on our project and must say that they have shown outstanding behaviour and workmanship.

"The team supervisor has been helpful, cooperative and communicative – all whilst pushing ahead with his objectives."

"The experience with Sherriff Construction Ltd has been very good and warrants a long-term relationship and repeat business. Your technical and commercial contribution at the early stages of most of the schemes provides us with cost certainty prior to order placement which has been beneficial to all parties including our most valued clients.

"Your service delivery on-site has also been exemplary with your compliant workforce who consistently achieve high productivity levels whilst ensuring health/ safety standards and quality assurances and procedures are met.

"The journey through the project life cycle from inception to completion is guaranteed to be a successful one by engaging early with Sherriff Construction Ltd."



*SHERIFF
CONSTRUCTION
(ROOFING)
PORTFOLIO*

CHESHUNT

Situated on what was formerly the Tesco HQ, the Cheshunt Lakeside development is regenerating this area and creating a vibrant new mixed-use community, comprising of 1,725 new homes, business space and amenities, including pocket parks and a new primary school.

Sheriff's roofing division supported Inland Homes with three phases of this project, including the development of 195 affordable homes, (ranging from one-bedroom studios to three-bedroom apartments) as well as the development of 22 new homes plus commercial space in a large L- shaped block at the corner of Windmill Road.

Across these phases, our roofing team installed the Axter waterproofing system for the balconies, main roof areas and podiums; Axter green roof finishes and shingle finishes to the main roof areas; and slabs on balconies.





HIGH WYCOMBE

In this landmark development, Sheriff Construction supported Inland Homes to transform a former brownfield site into a development of around 300 homes (a mix of one and two-bedrooms and studio apartments) plus over 15,000 sq. ft of commercial space.

Sheriff installed an innovative blue roof using a waterproofing system supplied by AXTER with Force Dalle warm roof system and a blue roof by ABG Ltd. Finishes include shingle and solar panels.



ARORA O2

Sheriff Construction was commissioned by Balfour Beatty in 2022 to undertake roofing repairs at the prestigious Intercontinental Arora Hotel O2 in Greenwich.

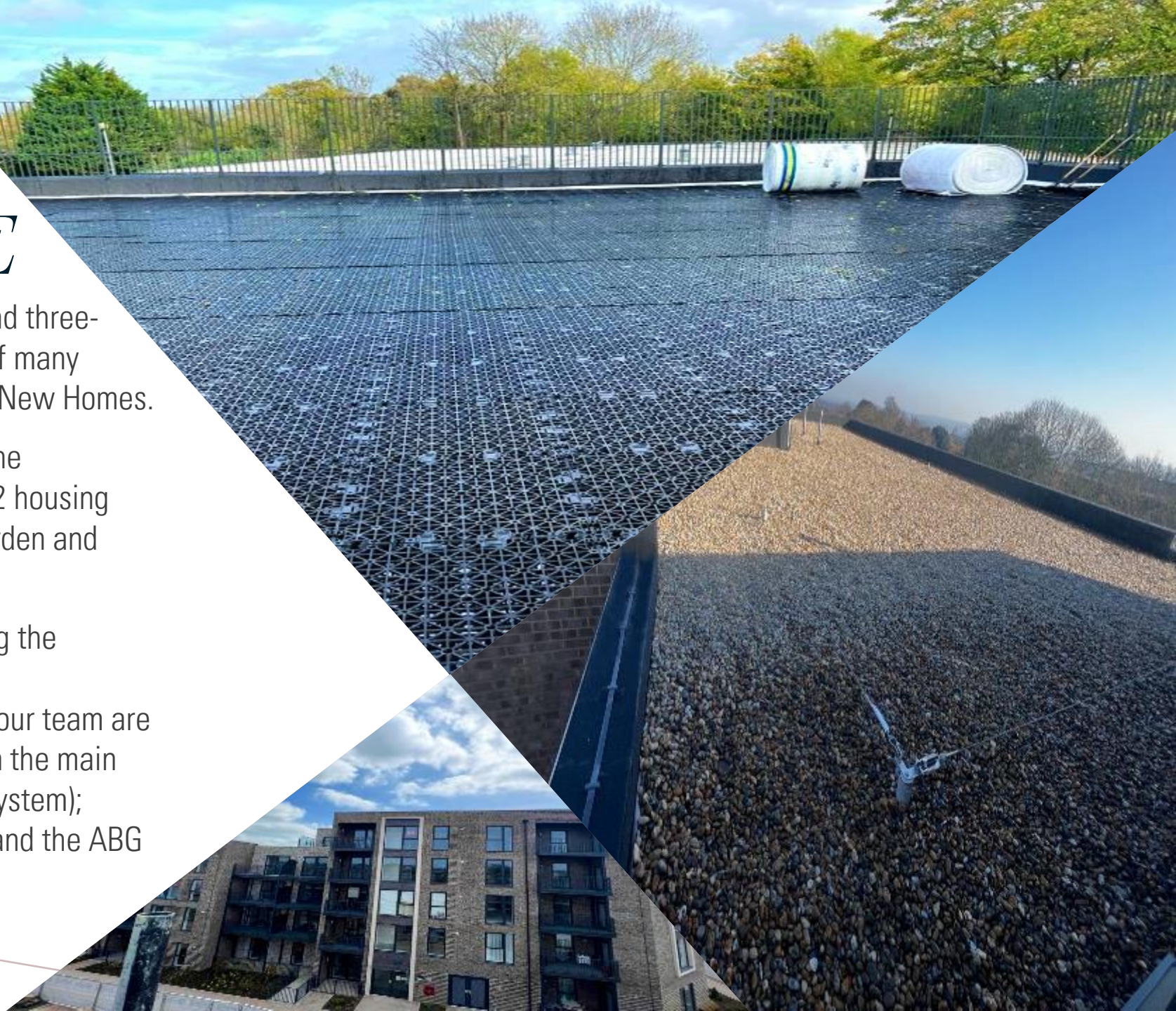
Our scope of works was to strip the roof area, install a cold liquid applied waterproofing system over the existing waterproofing and then re-lay all the finishes.

EPPING GATE

This stunning development of one, two and three-bedroom apartments in Loughton is one of many projects we have carried out for Fairview New Homes.

Spread over three blocks of 3-5 storeys, the development consists of 97 private and 42 housing association units along with a podium garden and both undercroft and surface car parking.

Sheriff took on the roofing works, applying the Mansafe design and install by Universal Safety Systems. Across the three blocks, our team are installing IKO PermaTEC waterproofing on the main roof, terraces and podium (inverted roof system); pebbles (shingle) to the main roof areas; and the ABG blue-roof system to the podium areas.



BARKING

Styled as 'the new heart of Barking', the former Abbey Road retail park is being transformed by Weston Homes into an exciting new 6-acre waterfront complex, featuring luxury apartments, a riverside plaza and walking routes along the River Roding, on-site shops, cafés, restaurants and welcoming communal spaces.

Our roofing division is working across four blocks, completing all phase 1 roofing and waterproofing works (using the Axter WILOTEKT SYSTEM for the inverted roofing and terraces plus Fatra liquid applied system on balconies).



PARK ROYAL

As part of a huge regeneration programme in West London, Sheriff supported Fairview New Homes with roofing works on three apartment blocks which included 807 flats (designed for a mix of private and housing association residents) plus a nursery, co-op store and other commercial space.

We undertook all waterproofing works using IKO systems, including all finishes (including on one block that reached 27 storeys in height). The project was completed in June 2022.

Take a look at our wider portfolio of roofing projects:
sheriffconstruction.co.uk/portfolio



*SHERIFF
BRICKWORKS
PORTFOLIO*

WOOLWICH

This 5-acre regeneration site in Woolwich was not only one of the first contracts to be secured since we restructured our company to create 'Sheriff Brickworks' but also our highest valued brickwork contract to date.

Sheriff Brickworks is managing the masonry works for around 340 new homes in apartment complexes that range from 2.5 to 15 storeys in height.

This significant win for Sheriff cements the strong relationship we've built up with Fairview and will provide our teams with in excess of 2 years work.

HATFIELD

By fulfilling a brickwork package at this site, Sheriff Construction supported Mears New Homes to construct the first new council homes built in the borough of Welwyn Hatfield for 25 years.

At the site, previously disused land was transformed into 22 new one and two bedroom flats (all made available by the council on an affordable rent tenure).



DAGENHAM

In the heart of a major East London regeneration zone, this four-acre brownfield development site is being developed by Inland Homes into a vibrant new residential and commercial district (comprising of 325 residential units, 1,514 sq. m of commercial space, 178 car parking spaces and associated amenity areas).

Supporting this project, Sheriff's brickwork division was contracted to execute all block and brick works across two concrete buildings. This was the first project that Sheriff took on board with the A1 fire regulation (over 18m) applied to all the materials (i.e. insulation and all fire breakers with high fire ratio, metal cavity trays and weep holes).

CHESHUNT

Situated on what was formerly the Tesco HQ, the Cheshunt Lakeside development is regenerating this area and creating a vibrant new mixed-use community, comprising of 1,725 new homes, business space and amenities, including pocket parks and a new primary school.

Our brickwork division supported Inland with the first phase of this project (the development of 195 affordable homes, ranging from one-bedroom studios to three-bedroom apartments) and with a further phase (involving the development of 22 new homes plus commercial space in large L-shaped block at the corner of Windmill Road).

Carrying out brick and block masonry and associated works, our team have used several suppliers including Gibbs and Dandy, CCF, PFC Corofil and Dorsey.





ERITH

Regeneration of the former Erith Baths site in Kent created 61 new residential units within the area – a combination of one, two and three-bedroom flats plus 11 three-bedroom houses

Supporting London & Quadrant with this development, Sheriff undertook brick and block work across the site and went on to fulfil a roofing contract too.

HIGH WYCOMBE

In this landmark development at the heart of High Wycombe, Sheriff Construction supported Inland Homes to transform a former brownfield site into a development of around 300 homes (a mix of one and two-bedrooms and studio apartments) plus over 15,000 sq. ft of commercial space.

Working with Inland for the first time on this project and completing works during the pandemic, Sheriff undertook a brickwork package across the site plus some waterproofing works on terraces, balconies and walkways.



Take a look at our wider portfolio of brickwork projects:
sheriffconstruction.co.uk/portfolio



LIMON HOMES

As a small but growing developer, our purpose is to identify development routes that maximise value for both the sale and rental markets.

TAVERN COURT

In 2018, we converted a disused Public House into a modern low-rise complex of 10 one and two-bedroom apartments plus some commercial space at ground level. As well as ensuring the high quality throughout the brickwork, roofing and internal works phases, internally, all of the apartments were finished to a supreme specification. Our goal with this project was to create homes that blended well with the local area, exceed expectations and offer sustainable living environments.

KINGHAM WAY

We converted these former milliners workshops and hat factories into a private gated development of luxury apartments, houses and bungalows. Managing all the external and internal works, our team worked hard to create a superb mix of distinctive and characterful accommodation, ensuring all of the one and two-bedroom apartments were built and fitted out to the highest standards.

NORTH STREET

After purchasing another brownfield site in Luton, Limon Homes, began working on this new build development of 15 two-bedroom apartments in February 2023. With the project completed in October of the same year, we managed all external and internal works, ensuring all of the apartments benefit from energy-saving features such as top-notch insulation, modern appliances and under-floor heating.



A close-up photograph of a hand holding several small, light-colored wooden human figures. The figures are arranged in a line, and the hand is positioned above them, suggesting care or support. The background is a dark, textured wooden surface.

OUR SOCIAL VALUE

"How we conduct our business is as important as what we do. This means we're committed to business practices that genuinely deliver social value."

- Supporting the people who work with us to prosper at work and across all aspects of their lives.
- Engaging positively with the communities and businesses that operate where our people live and work.
- Contributing to wider societal goals such as reducing inequality and protecting the natural environment.

SOCIAL VALUE IN PRACTICE

- Supporting our team to gain the skills and qualifications they need to access and be highly competent members of the local job market.
- Offering opportunities for young people to take up Apprenticeships and work experience placements while studying for construction-related roles.
- Procuring goods and services from businesses that are local to our Head Office and site locations wherever possible.
- Ensuring our procurement systems allow for fair access from small, medium, micro-sized businesses, social enterprises and minority-owned businesses.
- Supporting the contractors we work alongside with the implementation of policies that benefit the communities where that work is carried out and reduce the impact on the environment.
- Supporting charitable causes (e.g. making corporate donations to local charities such as Mary Seacole and Luton All Women's Centre, sponsoring local grass roots football teams and raising funds for charities such as MacMillan Cancer Support).
- Promoting environmental policies and practices in our Toolbox Talks and via regular features in our company blog.

OUR LEADERSHIP TEAM

Ekrem Mahmutaj, Managing Director

Ekrem has led, developed and grown the company from its early beginnings into the much larger and more specialised enterprise that Sheriff Construction has now become. Today, Ekrem takes overall responsibility for the strategic direction of the business, leading on several key areas such as client relationships, contract negotiation, team development, sales strategy, forecasting and much more.

Arsim Mahmutaj, Contracts Manager (Roofing)

Originally joining Sheriff as an apprentice, Arsim was among the first in our team to be qualified in flat-roofing installation. Having worked for many years as a site Foreman, Arsim is now a shareholder at Sheriff Construction and in 2019 became the Contracts Manager for our roofing division. He has continued to develop himself throughout this time taking on additional Health and Safety roles with both an NVQ and IOSH certification.

Shahin Mahmutaj, Contracts Manager (Brickwork)

Shahin worked as part of a bricklaying gang (alongside Sheriff's Managing Director) long before Sheriff ever existed as a company. Being part of Sheriff's story from day 1, Shahin worked his way up to become a site Foreman and, following a company restructure in 2019, became the Contracts Manager for our brickwork division. He is also a shareholder in the company.



OUR QS/ ESTIMATING TEAM

Nigel Bichener, Senior Estimator

Nigel is our Senior Estimator on the roofing side of the business. With over 20 years' experience, Nigel has worked with Axter, Iko, Fatra, Sika and Bauder systems. His extensive knowledge in flat-roofing has recently introduced us to new clients for 2023.

Refit Dragoti, Quantity Surveyor

After joining Sheriff as a junior QS, Refit has since become an integral part of the roofing team and having recently gained certification in NEBOSH, he is now also Sheriff's competent Health and Safety Advisor.

Lamanda Mahmutaj, Apprentice Quantity Surveyor

Our first head office apprentice! Lamanda spent a year's work experience learning all aspects of the business. In September of this year, she officially enrolled at LSBU where she is undertaking a RICs certified QS diploma.

OUR CREDENTIALS

“Performance, quality workmanship, qualifications, adequate insurance, professional standards and health and safety credentials are all vital to how we conduct our business at Sheriff Construction.”

- We run a continuous programme of training and improvement for our team.
- Approved to install a range of flat roofing solutions including IKO PermaTEC, IKO Polymeric, Fatra, Axter, Radmat, TuffStuff, Topseal, Bauder and more.
- Two of our management team have successfully completed the ‘Managing Safely’ course run by the Institute of Occupational Safety and Health (IOSH).
- We have an in-house NEBOSH certified competent Health and Safety Advisor.
- We employ an external professional Safety Advisor as required.
- Compliant with the Contractors Health and Safety Assessment Scheme (CHAS).
- Worksafe Contractor approved by the Safety Management Advisory Services (SMAS).
- Gold members of Constructionline, the UK’s largest register for pre-qualified contractors and consultants.
- Full indemnity cover for all our activity, including £10M worth of employers and £5m public and products liability insurance.
- We have a full set of company policies in place covering areas such as equality/ diversity, environment, quality, health and safety and data protection.

Ask us for copies of policies, certificates or insurance documents.





CONTACT AND SOCIALS

Sheriff Construction Ltd

61b Runfold Avenue Luton
LU3 2EJ

Tel: 01582 591908

Email: info@sheriffconstruction.co.uk

Website: sheriffconstruction.co.uk

Facebook: facebook.com/sheriffLtd

LinkedIn: linkedin.com/company/sheriff-ltd

**Read our regular blog and sign up:
sheriffconstruction.co.uk/news**